

# Vandal protection xCR-S (Mini) G2

## Accessories

When a BCR-S Mini G2 or SCR-S G2 card reader is installed in a challenging environment where vandalism or hard and heavy objects may hit the reader, a Vandal Protection frame can be used. The frame absorbs and redirect the forces and protects the card reader from damage.

**Art nr:** 44280295 Vandal protection xCR-S (Mini) G2

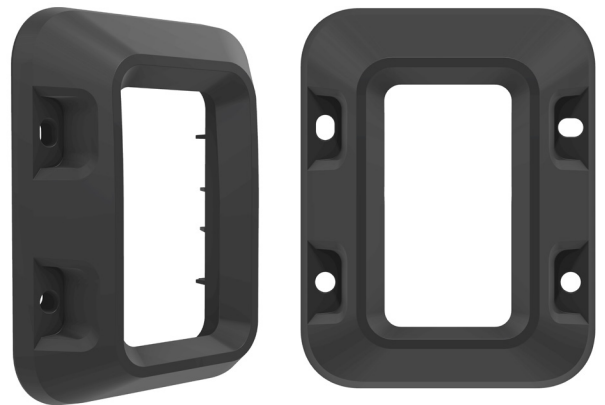
**Compliant with:** 44280296 Installation plate for Vandal Protection xCR-S (Mini) G2

## Performance

With a frame made in sturdy polyamid PA66 plastic with the same color as the front of the card reader, this makes a stylish installation.

The vandal protection redirect and absorbs power from side and front blows and protects the reader from tampering and vandalism. With the smooth surface and sloped frame of the vandal protection, it is difficult to use the reader as a climbing step

An installation plate is strongly recommended when the card reader is installed on a metal surface to minimize problems with low reading distance caused by interference from a metal surface.



### Technical data

Dimensions (w/h/d)	90 / 116 / 29,6 (mm)
--------------------	----------------------

Weight	56 g
--------	------

Colour RAL	Black NCS S9000N
------------	------------------

### Article number

44280295	Vandal protection xCR-S (Mini) G2
----------	-----------------------------------